

◀ Road markings draped over Civil 3D surface

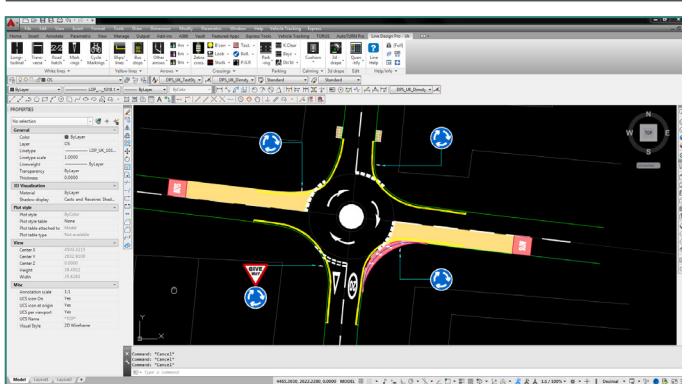


LINE DESIGN PRO™ UK Version

LINE DESIGN PRO - QUICK DESCRIPTION

Line Design Pro UK is add-on for AutoCad that makes designing complex road marking drawings simple from: parking bays, crossings, tactiles & all types of lining from TSRGD all with minimal effort. Centre line hatching can be added to your AutoCad drawing as an intelligent object in seconds. Line Design Pro UK supports grip editing on many of the already powerful line design tools available.

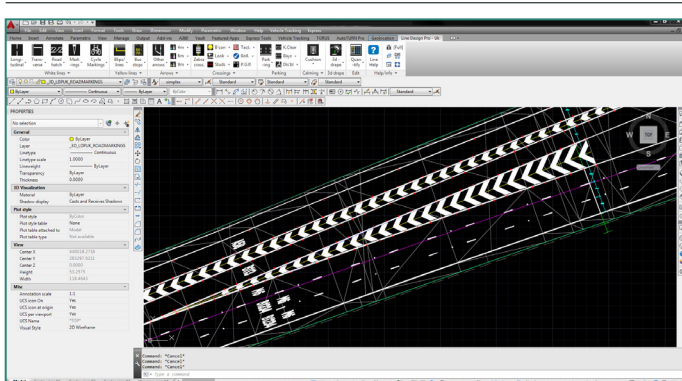
Traditional 2d line design



▶ Mini roundabout.

All road markings follow a simple to use AutoCAD input method when designing complex or simple road markings. To manipulate markings intelligent grips are enabled as on complex markings and double clicking brings up options to adjust and edit for ease of use.

Road Hatching



▶ Tigertail 1040 markings.

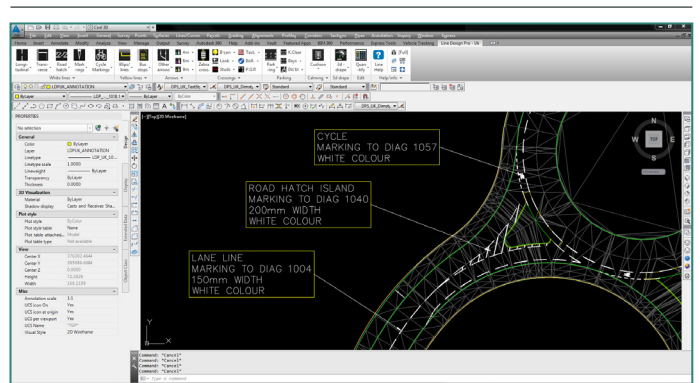
1040 series road markings or Tigertails can be designed by drawing the markings to suit or they can be attached to existing polylines. Other options such as knockout Zones can be removed while still retaining the intelligence of the marking and adding coloured surfacing is added by a check box.

“ Line Design Pro has become an invaluable tool to our business for drawing development.

A1+
Stuart Whitby



Annotate markings

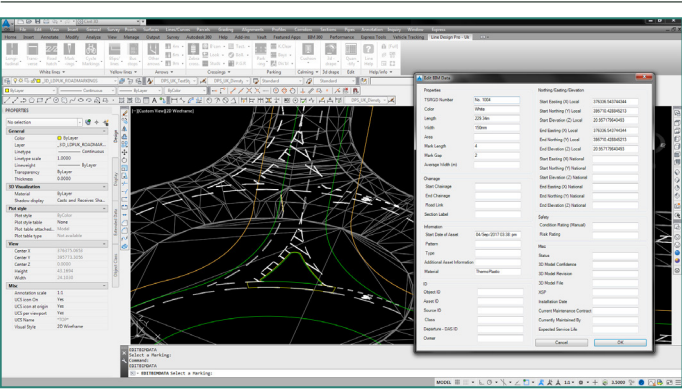


▶ Customisable annotation.

All road markings can be annotated with a one button press and selection. Any annotation box option can be edited to suit your company design rules from the text height and colour to the style of the leader arrow and font.



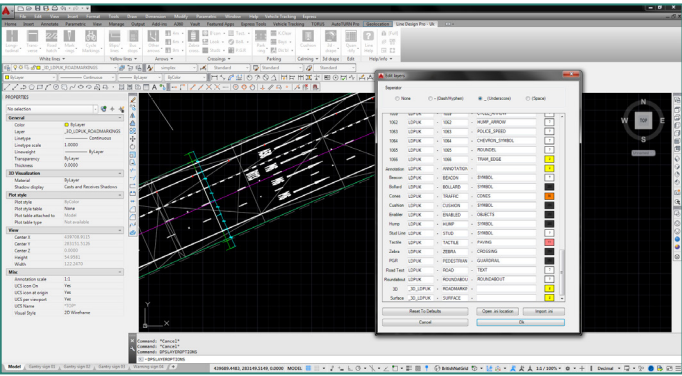
Data



► BIM Data Dialog.

ADMM Data attached to each object is added automatically to each asset. Asset data can be customised or edited at any time by using the Asset data dialog.

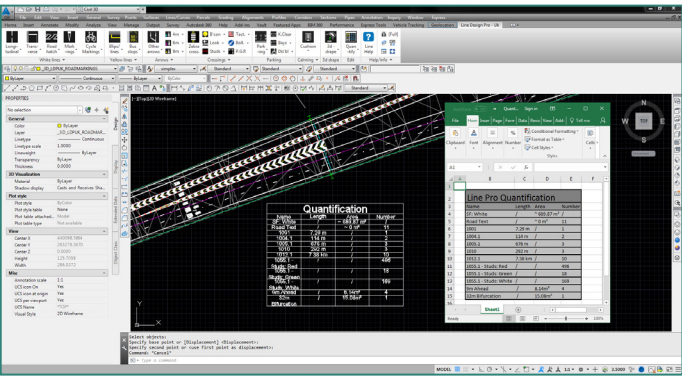
Custom Layers



► Customisable layers.

Each layer can be customised individually and edited to suit project requirements. The saved layers can then be distributed around design teams and imported / exported to other software users to maintain consistent company cad standards.

Add quantification



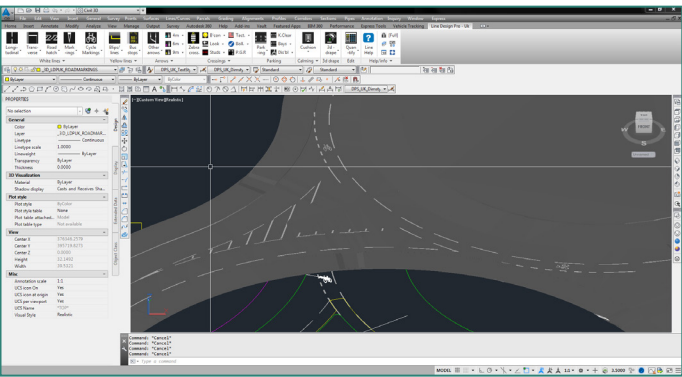
► Quantication added to drawing and Excel.

Road markings can be quantified at the touch of a button and added to the drawing or exported to an Excel spreadsheet. The automatic nature means you are not tied up manually adding together lines yourself, and the data is laid in a simple to read tabular format.

WHY LINE DESIGN PRO UK?

- Export Asset data
- Drape 3D road markings
- Level 2 BIM Product
- Intelligent 1040 Tigertail
- Grip editing
- Automatic Quantification
- “No” object enabler needed
- Civil 3D Surface integration

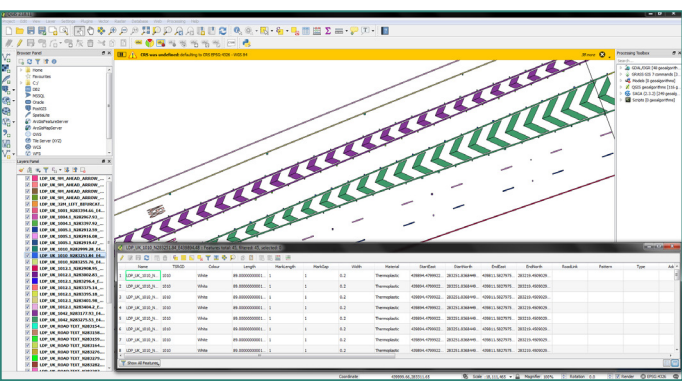
3D Drape



► 3D Road markings.

2d road markings can be draped over a 3d surface with a single button press or individually selected for more precise control. The markings follow the Civil 3d corridor exactly, this is ideal for use in 3d drive views where schemes can be viewed in real time, or used in presentations.

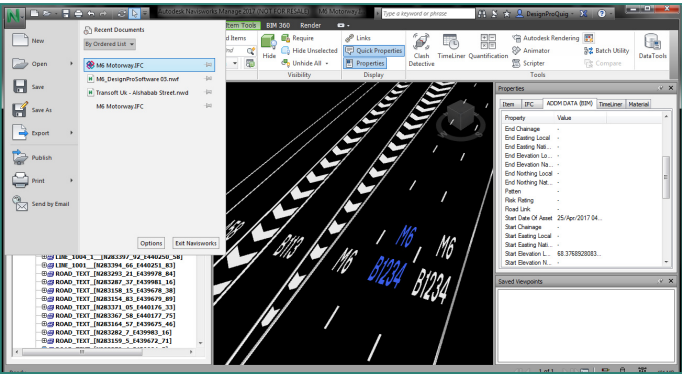
GIS Export



▶ Road markings exported to GIS.

Road marking designs can now be exported to GIS (ESRI) format. This means that the whole design can be exported as .shp files complete with asset data (.db) and spatial information (.sp) for accurate Geo-positioning.

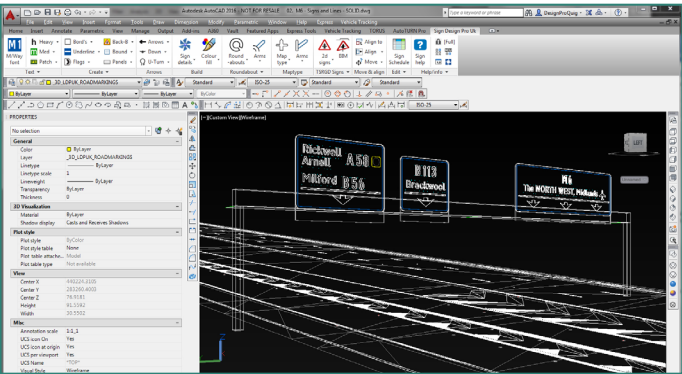
IFC Export



▶ Road markings exported to IFC.

Industry Federation Class or IFC by Buildingsmart is the standard BIM format in the Engineering industry for the collaboration of data rich 3D models in design projects. Road markings can now be exported to .ifc format with a single button press ready for importing into BIM Collaboration software such as Navisworks.

BIM



▶ 3D Road markings draped over a surface.

Sign Design Pro UK is a BIM Level 2 product: we produce 2d / 3d models and assets for collaboration and we export to GIS and IFC formats to help Engineers work together simpler. ADMM Data is attached to our assets so users do not have to worry if this is being done, the task is automatic. Our drawings are all sharable because we don't use object enablers to complete the BIM lifecycle.

EUROPE / MID. EAST / AFRICA

EUROPEAN HEADQUARTERS

Transoft Solutions B.V. Europe
Wijnstraat 96c
3011 TR Rotterdam
The Netherlands

PHONE
+31 10 258 78 78

FAX
+31 10 258 78 77

EUROPEAN OFFICES

UK +44 (0)161 222 0208
Germany +49 (0)221 77 109 299

EMAIL US

GENERAL INQUIRIES
infoeu@transoftsolutions.com

MEDIA CONTACT
publicrelations@transoftsolutions.com

SALES
eusales@transoftsolutions.com

TECHNICAL SUPPORT
support_europe@transoftsolutions.com

WEBSITES

www.transoftsolutions.com/emea